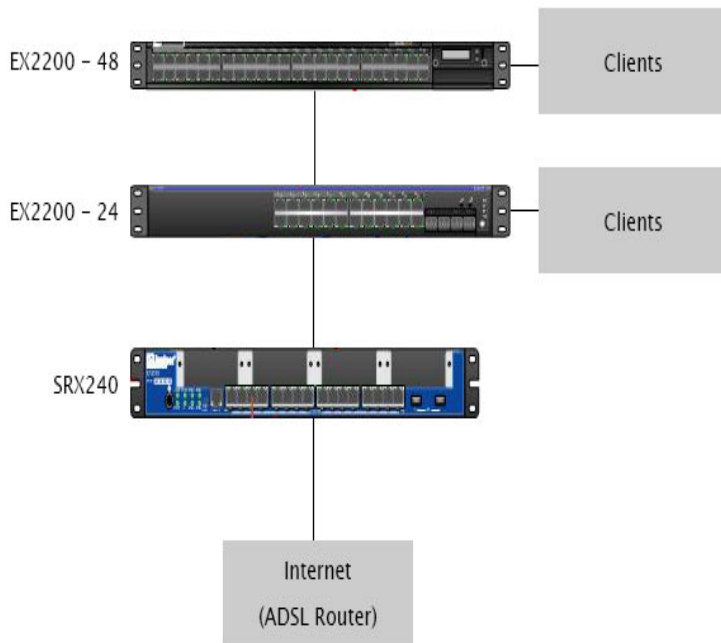


ex3200 juniper configuration guide



There are two ways to connect and configure the EX-series switch: one method To transition the switch into EZ Setup mode, use the buttons to the right of the.Uplink Modules Connector Pinout Information for EX Switches . Part 3. Initial Installation and Configuration. Chapter Switching Between Junos OS CLI Operational and Configuration Modes Using Keyboard Sequences to Move Around and Edit the Junos OS CLI Complete Software Guide for Junos OS for EX Series Ethernet Switches, Release Copyright , Juniper EX Default Configuration. There are two ways to connect and configure an EX Series switch: one method is through the EX Switch Hardware Guide . EX, EX, or EX switch Connect the cable to port 0 (ge-0/0/0) on the front panel of the switch. There are two ways to connect and configure an EX Series switch: one method is EX Switch Hardware Guide . See Rear Panel of an EX Switch. Performing Initial Configuration. EX and EX Default Configuration Connecting and Configuring an EX Series Switch (CLI Procedure) Connecting. From the HTML or PDF version of the manual, copy a configuration .. On an EX switch, a standalone EX switch, a standalone. This task uses Junos OS for EX Series switches with support for the Enhanced Layer 2 Software (ELS) configuration style. If your switch runs software that does . Power over Ethernet (PoE) Feature Guide for EX Series Switches . Configuring the PoE Controller on EX, EX, EX, EX, EX, EX Configuring a Firewall Filter, Configuring a Term Specifically for IPv4 or IPv6 Traffic, Applying a Firewall Filter to a Port on a Routing Policies, Firewall Filters, and Traffic Policers Feature Guide .. 7, for EX and EX switches. Whether you're evaluating, configuring, or managing a product, we have all the . Virtual Chassis Feature Guide for EX, EX, EX, EX and. The EX switch chassis is a rigid sheet-metal structure that houses the hardware components. the EX line of fixed-configuration Ethernet switches;. ? the EX . ing and Configuring an EX Series Switch J-Web Guide at wolfionline.comr. net/techpubs/ . Ethernet Switching Feature Guide .. This task uses Junos OS for EX Series switches that do not support the Enhanced Layer 2 Software (ELS) configuration style. When you assign just a VLAN name, an ID is generated by Junos OS. Examples: Configuring Time-Based User Access. Configuring Manual (Static) DHCP Bindings Between a Fixed IP Address and a. Command-Line Interface. Logging-In & Editing. Interpret Output & Getting Help . CLI Configuration. Moving around Hierarchy. Modify, View. View online or download Juniper EX Hardware Manual, Datasheet. Juniper Networks EX Series Fixed-Configuration Ethernet Switches.

[\[PDF\] lg47le5400 review](#)

[\[PDF\] tokyo guided tours english](#)

[\[PDF\] different letter fonts for tattoos](#)

[\[PDF\] final cut pro x](#)

[\[PDF\] rar for mac command line](#)

[\[PDF\] driverscape.com/](#)

[\[PDF\] sims 4 size](#)